

# EPSON

## SC-F2200 Series

# General Information

---

---

CMP0413-00 EN

## Copyrights and Trademarks

---

### **Copyrights and Trademarks**

No part of this publication may be reproduced, stored in a retrieval system, or transmitted in any form or by any means, electronic, mechanical, photocopying, recording, or otherwise, without the prior written permission of Seiko Epson Corporation. The information contained herein is designed only for use with this Epson printer. Epson is not responsible for any use of this information as applied to other printers.

Neither Seiko Epson Corporation nor its affiliates shall be liable to the purchaser of this product or third parties for damages, losses, costs, or expenses incurred by the purchaser or third parties as a result of accident, misuse, or abuse of this product or unauthorized modifications, repairs, or alterations to this product, or (excluding the U.S.) failure to strictly comply with Seiko Epson Corporation's operating and maintenance instructions.

Seiko Epson Corporation shall not be liable for any damages or problems arising from the use of any options or any consumable products other than those designated as Original Epson Products or Epson Approved Products by Seiko Epson Corporation.

Seiko Epson Corporation shall not be held liable for any damage resulting from electromagnetic interference that occurs from the use of any interface cables other than those designated as Epson Approved Products by Seiko Epson Corporation.

Microsoft® and Windows® are registered trademarks of Microsoft Corporation.

Mac and macOS are registered trademarks of Apple Inc.

Intel® is a registered trademark of Intel Corporation.

Adobe and Reader are either registered trademarks or trademarks of Adobe Systems Incorporated in the United States and/or other countries.

YouTube® and the YouTube logo are registered trademarks or trademarks of YouTube, LLC.

Firefox is a trademark of the Mozilla Foundation in the U.S. and other countries.

Chrome™ is a trademark of Google Inc.

*General Notice: Other product names used herein are for identification purposes only and may be trademarks of their respective owners. Epson disclaims any and all rights in those marks.*

© 2023 Seiko Epson Corporation.

---

## Contents

### **Copyrights and Trademarks**

#### **Notes on Manuals**

Meaning of Symbols. . . . .	4
Screenshots. . . . .	4
Illustrations. . . . .	4
Manual Organization. . . . .	4
Viewing Video Manuals. . . . .	4
Viewing PDF Manuals. . . . .	5

#### **Using the Printer**

Overview. . . . .	6
Attaching a Grip Pad. . . . .	7
Loading the T-shirt (media). . . . .	8
Start Printing. . . . .	11

#### **System conditions**





Epson Edge Dashboard. . . . .	12
Garment Creator 2. . . . .	13
Garment Creator Easy Print System (Windows Only). . . . .	13
Web Config. . . . .	14

#### **Specifications Table**

# Notes on Manuals

## Meaning of Symbols

This manual uses the following symbols to indicate dangerous operations or handling procedures to prevent harm to users or other people or damage to property. Make sure you understand these warnings before reading the content of this manual.

 <b>Warning:</b>	Warnings must be followed to avoid serious bodily injury.
 <b>Caution:</b>	Cautions must be followed to avoid bodily injury.
 <b>Important:</b>	Important must be followed to avoid damage to this product.
<b>Note:</b>	Notes contain useful or additional information on the operation of this product.
	Indicates related reference content.

## Screenshots

The screenshots used in this manual may differ slightly from the actual screens.

## Illustrations

The illustrations may differ slightly from the model you are using. Please be aware of this when using the manual.

## Manual Organization

The manuals for the product are organized as shown below.

You can view the PDF manuals using Adobe Reader or Preview (Mac OS X).

Setup Guide (booklet)	Provides information on how to setup the printer after unpacking it from the box. Make sure you read this manual to perform operations safely.
General Information (this manual)	This manual provides specifications and contact details for the product.
Safety Instructions	This section provides information that must be followed to prevent harm to users or other people or damage to property. Make sure you read this section to perform operations safely and correctly. For some regions, this content is included in the Setup Guide.
Epson Support (PDF)	Provides information about Epson Support for each region.
Online Manuals	
User's Guide (PDF)	This manual explains how to use the printer.
Epson Video Manuals	These videos show you how to load media and perform maintenance.
Network Guide (PDF)	This manual provides information on using the printer over a network.
Epson Support (PDF)	Provides information about Epson Support for each region.

## Viewing Video Manuals

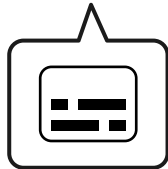
The video manuals have been uploaded to YouTube.

Click **Epson Video Manuals** from the top page of Online Manuals, or click the following blue text to view the manuals.

## Notes on Manuals

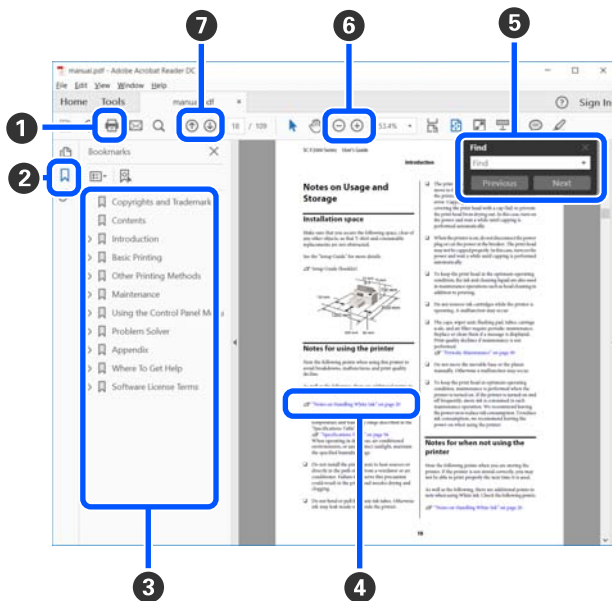
### Epson Video Manuals

If the subtitles are not displayed when you play the video, click the subtitles icon shown in the image below.



## Viewing PDF Manuals

This section uses the Adobe Acrobat Reader DC as an example to explain the basic operations for viewing the PDF in Adobe Reader.



1 Click to print the PDF manual.

2 Each time it is clicked the bookmarks are hidden or shown.

3 Click the title to open the relevant page.

Click [+] to open the titles lower in the hierarchy.

4 If the reference is in blue text, click the blue text to open the relevant page.

To return to the original page, do the following.

#### For Windows

While pressing the Alt key, press the ← key.

#### For Mac

While pressing the command key, press the ← key.

5 You can input and search for keywords, such as the names of items you want to confirm.

#### For Windows

Right click on a page in the PDF manual and select **Find** in the menu that is displayed to open the search toolbar.

#### For Mac

Select **Find** in the **Edit** menu to open the search toolbar.

6 To enlarge text in the display that is too small to see well, click ⊕. Click ⊖ to reduce the size. To specify a part of an illustration or screenshot to enlarge, do the following.

#### For Windows

Right click on the page in the PDF manual and select **Marquee Zoom** in the menu that is displayed. The pointer changes to a magnifying glass, and you can use it to specify the range of the place you want to enlarge.

#### For Mac

Click **View** menu - **Zoom** - **Marquee Zoom** in this order to change the pointer to a magnifying glass. Use the pointer as a magnifying glass to specify the range of the place you want to enlarge.

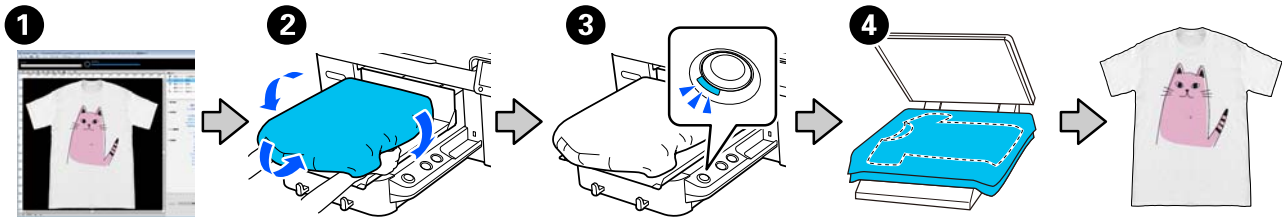
7 Opens the previous page or next page.

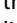
Using the Printer

# Using the Printer

## Overview

This section explains the process from loading cotton media on the supplied platen to printing with color ink only. To use the optional platen or print with White ink, see the *User's Guide* (Online Manual).



Work Item	Summary
<p>1 Creating/Sending Jobs</p>	<p>Send the job created by laying out images in Garment Creator 2, to this printer. See the Garment Creator 2 manual for more details.</p>
<p>2 Loading the T-shirt (media)</p>	<p>Attach the platen to the printer, and then load the T-shirt (media).  <a href="#">☞ "Loading the T-shirt (media)" on page 8</a>                      When using the platen for the first time, attach the grip pad supplied beforehand.  <a href="#">☞ "Attaching a Grip Pad" on page 7</a></p>
<p>3 Printing</p>	<p>Confirm that the job has been received and the lamp on the  button on the printer is lit before you start printing.  <a href="#">☞ "Start Printing" on page 11</a></p>
<p>4 Fixing the Ink</p>	<p>Remove the T-shirt from the printer, and then fix the ink in a heat press or oven.                      The optimum conditions vary depending on the media fabric or the device for fixing ink.                      See the <i>User's Guide</i> (Online Manual) for more details.</p>

**Note:**

In the following situations, you need to apply a pre-treatment liquid to the printing surface before loading the media.

- When printing White ink on cotton media
- When printing on polyester media (in any ink color)

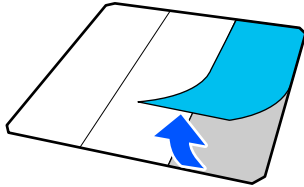
Applying a pre-treatment liquid will fix the ink to the T-shirt and improve the color development.

See the *User's Guide* (Online Manual) for more details.

Using the Printer

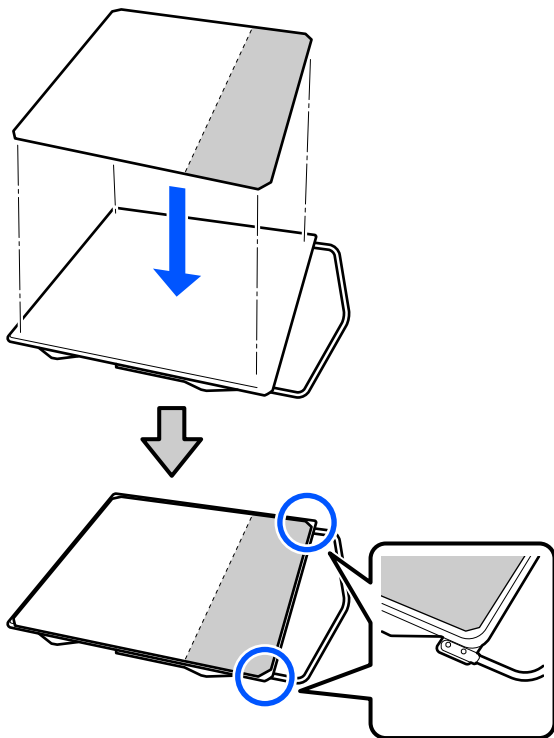
# Attaching a Grip Pad

**1** Only peel off one section on the back of the grip pad as shown in the illustration.

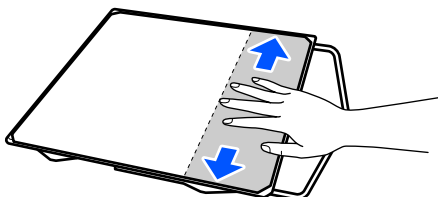


**2** Place the platen on a flat surface, align the corners of the grip pad so they are slightly inside the corners of the platen, and then fasten the adhesive side of the grip pad to the platen.

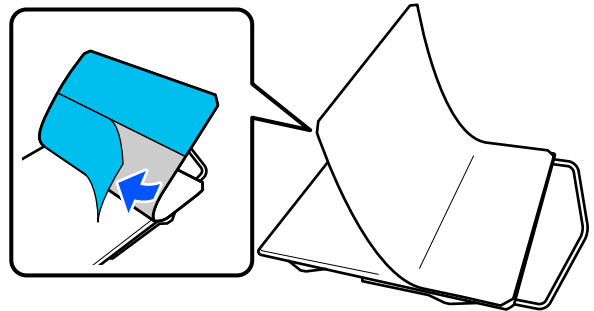
Do not allow the corners of the grip pad from which the back has not been removed to protrude from the edges of the other side of the platen.



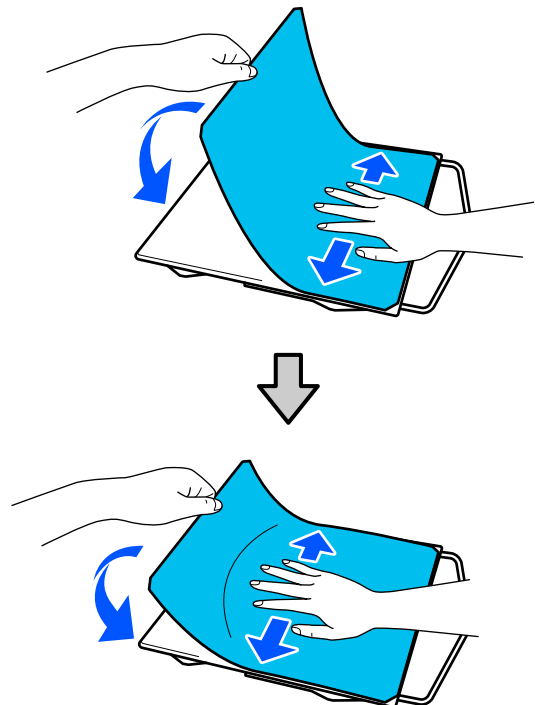
**3** Gently press on the section from which the back has been peeled off the grip pad to stick the grip pad onto the platen.



**4** Peel off all of the other sections on the back of the grip pad as shown in the illustration.




**5** Stick it from the end that is already stuck, as shown in the illustration.

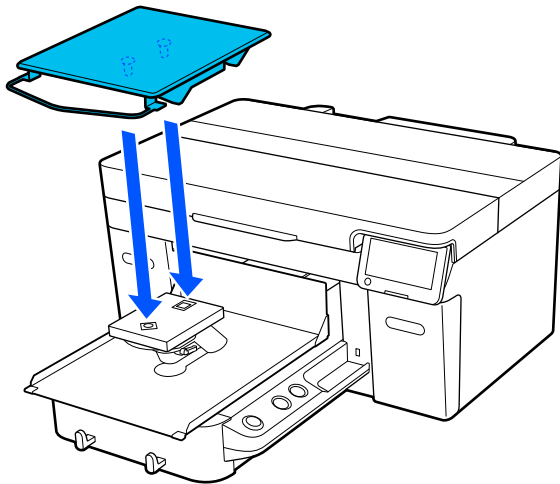



## Loading the T-shirt (media)

You can check the procedure in a video on YouTube.

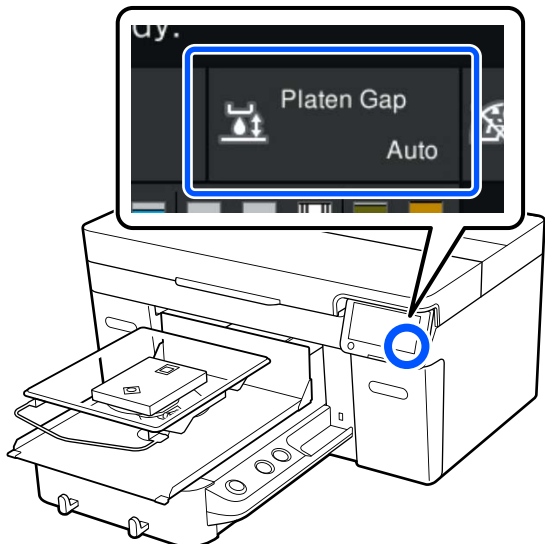
[Epson Video Manuals](#)

- 1 Press the  button to turn on the printer.
- 2 Hold the supplied platen so that the hanger is facing you, and insert it so that the shaft of the platen fits into the slot.

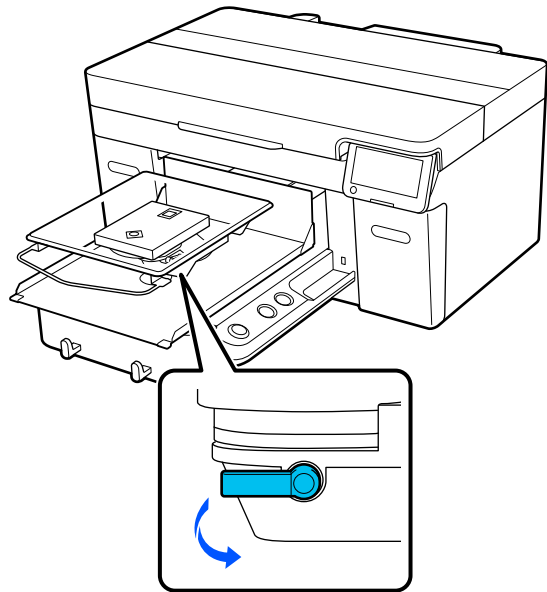


**Note:**  
If the platen does not move forward, press the  button to move it forward.

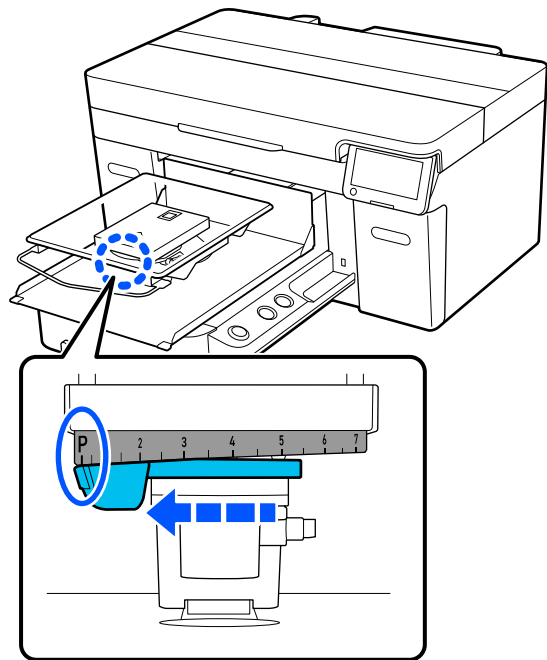
- 3 On the printer's screen, confirm that **Platen Gap** is set to **Auto**.



- 4 Loosen the fixing lever.



- 5 Move the lever clockwise to set the scale to P.



When the scale is at P, the platen is at its highest position; the platen position lowers as the number increases.

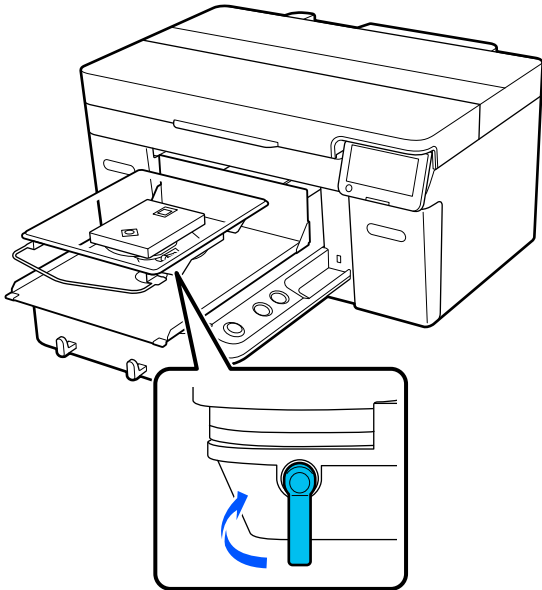
Moving the lever in the counterclockwise direction increases the numbers, which lowers the platen position.

Moving the lever in the clockwise direction decreases the numbers, which raises the platen position.

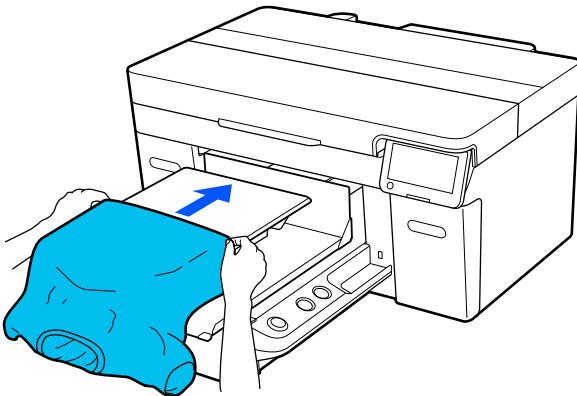


### Using the Printer

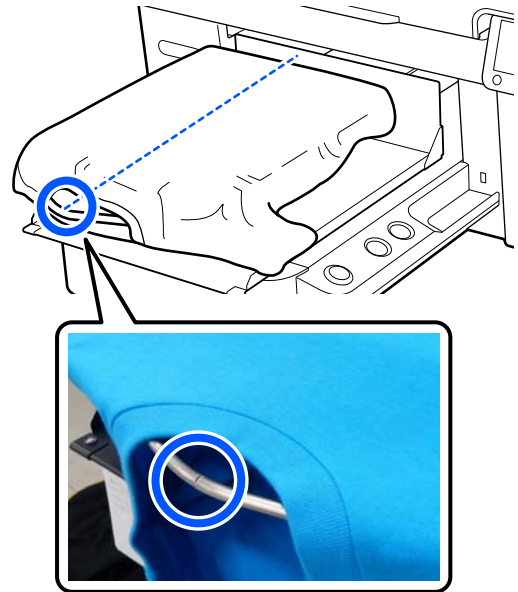
- 6** Tighten the fixing lever, and then secure the platen gap lever.



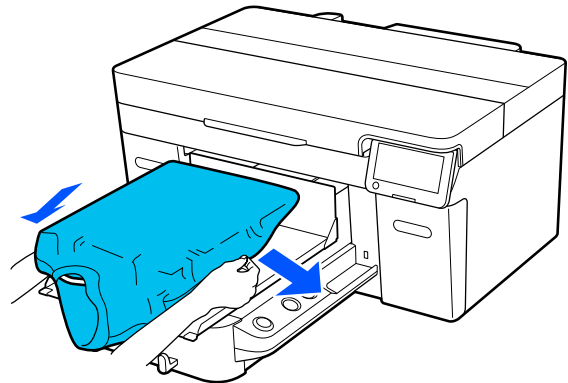
- 7** Slide the hem of the T-shirt over the platen from the front.



The line inside the frame in the illustration indicates the center of the platen.



- 8** Pull the parts of the shirt that extend beyond the platen to flatten the print surface.



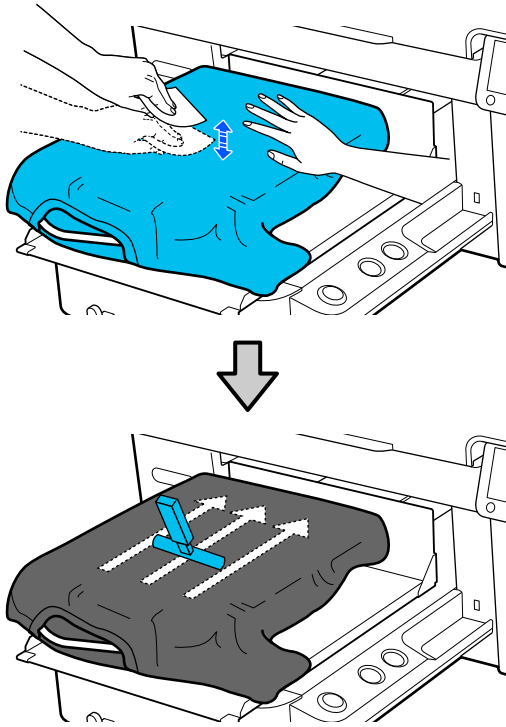
**!** **Important:**

*Do not pull too hard on the T-shirt. If the T-shirt is stretched too much, the print quality may decline due to deformed images and so on, and the white under-base print may extend outside the image.*

### Using the Printer

- 9** Remove any lint from the printing surface, and press the fibers flat.

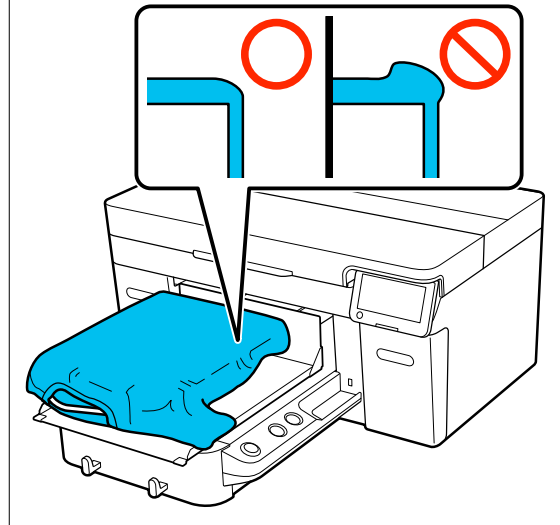
There may be lint on the T-shirt if you have not applied pre-treatment liquid. Remove the lint using the sticky tape or roller and press the fibers flat using the hard roller. Lint and fibers may stick to the print head and stain other areas.



- 10** Remove any slack or creases from the printing surface and make it flat.

**! Important:**

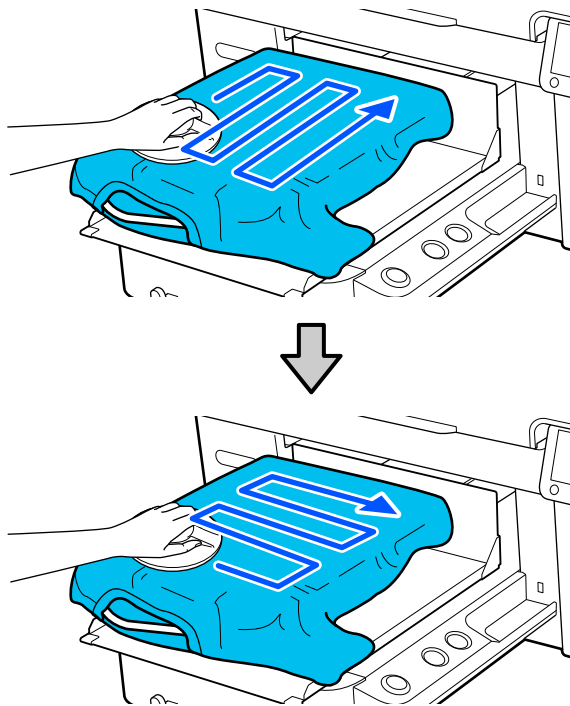
*The printer detects the highest part of the print surface. If there is any slack or creasing as shown in the illustration below, the distance between the print head and the print surface may increase and print quality may decline. Flatten the T-shirt so that there is no slack or creasing.*



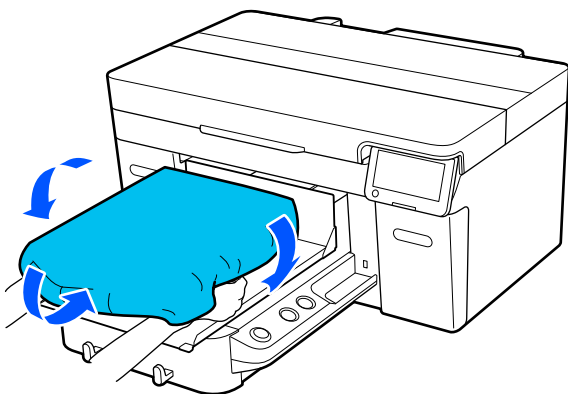
Use the grip pad tool supplied to flatten the printing surface. The T-shirt sticks to the grip on the platen keeping it flat and preventing it from moving during printing.

## Using the Printer


Press the T-shirt lightly with the grip pad tool and move it vertically and horizontally from the edges as shown in the following illustration. Repeat this step 2 or 3 times to remove any slack or creases and make the printing surface flat.

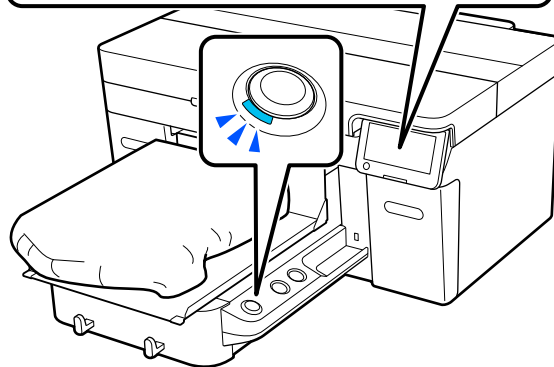
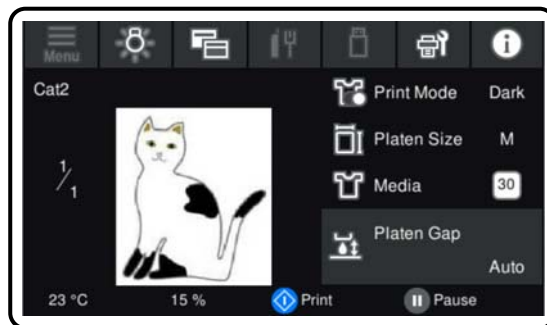



- 11** Tuck in the T-shirt so that it does not drape over the movable base.



## Start Printing

- 1** When a job has been completely received, the preview display opens on the screen and the lamp on the  button turns on.



- 2** Check that the T-shirt is loaded, and then press the  button.

## System conditions

# System conditions

The software can be used in the following environments. (As of April, 2023)

Supported OS and other elements may change.

For the latest information, see the Epson Web site.

## Epson Edge Dashboard

 **Important:**

*Make sure the computer on which the Epson Edge Dashboard is installed meets the following requirements.*

*If these requirements are not met, the software cannot monitor the printer correctly.*

- Disable your computer's hibernate function.*
- Disable the sleep function so that the computer does not enter sleep status.*

### Windows

Operating system	Windows 7 SP1*/Windows 7 x64 SP1* Windows 8*/Windows 8 x64* Windows 8.1*/Windows 8.1 x64 Windows 10*/Windows 10 x64 Windows 11
CPU	Intel Core2Duo 2.5GHz or more
Free memory	1 GB or more
Hard disk (free space during installation)	2 GB or more
Display resolution	1280 x 1024 or better
Communication interface	High Speed USB Ethernet 1000Base-T
Browser	Internet Explorer 11 Microsoft Edge

\*Does not support Garment Creator 2.

### Mac OS X

Operating system	Mac OS X 10.7 Lion or later*
CPU	Intel Core2Duo 2.5GHz or more
Free memory	1 GB or more

**System conditions**

Hard disk (free space during installation)	2 GB or more
Display resolution	1280 x 1024 or better
Communication interface	High Speed USB Ethernet 1000Base-T
Browser	Safari 6 or later

\*mac OS X 10.11 or earlier does not support Garment Creator 2.

**Garment Creator 2****Windows**

Operating system	Windows 8.1 x64/Windows 10 x64/Windows 11
CPU	Multi-core processor (Intel Core i7 8th generation or later recommended)
Memory capacity	2 GB or more (16 GB or more recommended)
Storage (free space during installation)	HDD 32 GB or more (SSD recommended)
Display resolution	1024 x 768 or better
Communication interface	High Speed USB Ethernet 1000Base-T

**Mac**

Operating system	Universal binary (64-Bit Intel and ARM) supported for macOS 10.12 and later.
CPU	Multi-core processor (Intel Core i7 8th generation or later recommended)
Memory capacity	2 GB or more (16 GB or more recommended)
Storage (free space during installation)	HDD 32 GB or more (SSD recommended)
Display resolution	1024 x 768 or better
Communication interface	High Speed USB Ethernet 1000Base-T

**Garment Creator Easy Print System (Windows Only)**

Operating system	Windows 8.1 x64/Windows 10 x64/Windows 11
CPU	Multi-core processor (Intel Core i7 8th generation or later recommended)
Memory capacity	2 GB or more (16 GB or more recommended)

**System conditions**

Storage (free space during installation)	HDD 32 GB or more (SSD recommended)
Display resolution	1024 x 768 or better
Communication interface	High Speed USB Ethernet 1000Base-T

**Web Config**

The following is a list of supported browsers. Make sure you are using the latest version.

Internet Explorer 11, Microsoft Edge, Firefox, Chrome, Safari

Specifications Table

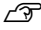
# Specifications Table

Printer Specifications	
Printing method	On-demand ink jet
Nozzle configuration	
White ink mode	White: 400 nozzles x 4 rows Color: 400 nozzles x 4 colors (Black, Cyan, Magenta, Yellow)
Color ink mode	Color: 400 nozzles x 4 colors (Black, Cyan, Magenta, Yellow)
High speed color mode	Color: 400 nozzles x 2 rows x 4 colors (Black, Cyan, Magenta, Yellow)
Resolution (maximum)	1200 x 1200 dpi
Control code	ESC/P raster (undisclosed command)
Platen feed method	Conveyor belt
Built-in memory	1 GB
Interface	
USB	Hi-Speed USB x 2 (rear: 1 for computer connection, front: 1 for USB memory)
Ethernet*1 standards	IEEE802.3i (10BASE-T) IEEE802.3u (100BASE-TX) IEEE802.3ab (1000BASE-T) IEEE 802.3az (Energy-saving model. Requires a connection device that supports IEEE802.3az.)
Rated voltage	AC100-240 V
Rated frequency	50/60 Hz
Rated current	3.4-1.6A
Power consumption	
While printing	Approx. 46 W
Ready mode	Approx. 30 W
Sleep mode	Approx. 7 W
Power off	Approx. 0.3 W


Printer Specifications	
Temperature	Recommended: 15 to 25 °C (59 to 77 °F) Operating: 10 to 35 °C (50 to 95 °F) Storage (before unpacking): -20 to 40 °C (-4 to 104 °F) (within 120 hours at 60 °C /140 °F, within one month at 40 °C /104 °F) Storage (after unpacking): -20 to 40 °C (-4 to 104 °F) (within one month at 40 °C /104 °F)
Humidity (without condensation)	Recommended: 40 to 60% Operating: 20 to 80% Storage: 5 to 85%
<p>Operating temperature/humidity</p> <p>Gray area: Operating</p> <p>Cross-hatch lines: Recommended</p> <p>(%)</p> <p>90 80 70 60 55 50 40 30 20</p> <p>10 15 20 25 27 30 35 40 (°C)</p>	
Dimension (When supplied platen is installed)	(W) 981 x (D) 1448 x (H) 499 mm ([W] 38.6 x [D] 57.0 x [H] 19.6 in.)
Weight (When supplied platen is installed, not including ink supply units)	Approx. 94.5 kg (Approx. 208.3 pounds)
Supported Media Types (T-shirts)	


**Specifications Table**

Printer Specifications	
Thickness	27 mm or less (1.06 in. or less)*2
Weight	1.5 kg or less (3.31 pounds or less)
Material*3	<input type="checkbox"/> Fabric with a cotton blend ratio of 100% to 50% (We recommend using thick fabric with a 100% blend ratio and a high density weave.) <input type="checkbox"/> Fabric with a polyester blend ratio of 100% to 50% (We recommend using a polyester blend ratio of 100%.)

- \*1 Use a shielded twisted pair cable (category 5 or higher).
- \*2 The maximum usable media thickness varies depending on the platen on which the media is loaded. See the following for details.  
  
 *User's Guide* (Online Manual)
- \*3 When printing on cotton T-shirts with white ink or when printing on polyester T-shirts, make sure you apply a pre-treatment liquid beforehand.

**Note:**  
 To ensure the colors you want to print, maintain a constant room temperature of 15 to 25 °C (59 to 77 °F).

 **Important:**  
 Use this printer at altitudes below 2000 m (6,562 ft.).

 **Warning:**  
 This is a class A product. In a domestic environment this product may cause radio interference in which case the user may be required to take adequate measures.

**For Users in EU Countries**

Information of EU declaration of conformity:

The full text of the EU declaration of conformity of this equipment is available at the following internet address.


<https://www.epson.eu/conformity>

**ZICTA Type Approval for Users in Zambia**

See the following website to check the information for ZICTA Type Approval.

<https://support.epson.net/zicta/>

Specifications for the ink supply unit and the cleaning ink supply unit	
Type	Dedicated ink pack
Types of ink	Pigment ink
Expiry date	Time limit printed on the package and ink supply unit (when stored at normal temperature)
Print quality guarantee expiry	1 year (after installed in printer)
Temperature	Operating: 10 to 35 °C (50 to 95 °F) In storage (in package) and after installation in printer: -20 to 40 °C (-4 to 104 °F) (within 4 days at -20 °C /-4 °F, a month at 40 °C /104 °F) Transporting (in package): -20 to 60 °C (-4 to 140 °F) (within 4 days at -20 °C /-4 °F, a month at 40 °C /104 °F, 72 hours at 60 °C /140 °F)
Dimensions	(W) 117 x (D) 360 x (H) 30 mm ([W] 4.6 x [D] 14.2 x [H] 1.2 in.)
Capacity	800 ml (27.1 oz)

 **Important:**  
 Do not refill the ink.

Pre-treatment liquid specifications	
Expiry date	See the date printed on the package (at normal temperature)



**Specifications Table**

<b>Pre-treatment liquid specifications</b>	
Temperature	<p>Cotton pre-treatment liquid</p> <p>Operating: 10 to 35 °C (50 to 95 °F)</p> <p>In storage (in package): -20 to 40 °C (-4 to 104 °F) (within 4 days at -20 °C (-4 °F), a month at 40 °C (104 °F))</p> <p>Transporting (in package): -20 to 60 °C (-4 to 140 °F) (within 4 days at -20 °C (-4 °F), a month at 40 °C (104 °F), 72 hours at 60 °C (140 °F))</p>
	<p>Polyester pre-treatment liquid</p> <p>Operating: 10 to 35 °C (50 to 95 °F)</p> <p>In storage (in package): 0 to 40 °C (32 to 104 °F) (within 4 days at 0 °C (32 °F), a month at 40 °C (104 °F))</p> <p>Transporting (in package): -20 to 60 °C (-4 to 140 °F) (within 4 days at -20 °C (-4 °F), a month at 40 °C (104 °F), 72 hours at 60 °C (140 °F))</p>
Capacity	<p>Cotton pre-treatment liquid</p> <p>20 L (5.29 gallons)</p>
	<p>Polyester pre-treatment liquid</p> <p>18 L (4.75 gallons)</p>
Dimensions	<p>(W) 300 x (D) 300 x (H) 300 mm ([W] 11.8 x [D] 11.8 x [H] 11.8 in.)</p>

<b>Ink cleaner specifications</b>	
Expiry date	See the date printed on the package (at normal temperature)
Temperature	<p>Operating: 10 to 35 °C (50 to 95 °F)</p> <p>In storage (in package): -20 to 40 °C (-4 to 104 °F) (within 4 days at -20 °C (-4 °F), a month at 40 °C (104 °F))</p> <p>Transporting (in package): -20 to 60 °C (-4 to 140 °F) (within 4 days at -20 °C (-4 °F), a month at 40 °C (104 °F), 72 hours at 60 °C (140 °F))</p>
Capacity	150 ml (5.072 ounces)